



The background image shows a large, three-story stone building with a central arched doorway and several windows. Some windows are covered in ivy. In the foreground, a group of students is sitting on a grassy lawn, some in small circles and others standing. The sky is overcast.

Year 6 Residential

8th – 10th October 2025

Why do we take the children on a residential trip?

Enjoyment

Personal achievement

Confidence

Social awareness

Environmental awareness

Life long memories

Health and fitness

Increased motivation

Broadened horizons

Team cohesion

Adventure

Personal Responsibility

What have the children said?

- Camp has taught me to never give up.
- It gave us the chance to get to know each other more.
- Overall, camp was exciting as we got to be away with our friends.
- I enjoyed doing things I had never done before
- It was an amazing experience!
- At dinner time, there was a selection of different meals – dessert was always on offer!
- I loved camp and I am so happy that I went – it was amazing!

Kilve Court Welcomes...

Castle Batch Primary School Academy



The Four Centres

- ❖ Kilve Court Residential Education Centres are part of Somerset County Council and fall under SSE
- ❖ There are four centres: Kilve Court, The Outdoor Centre, Great Wood & Charterhouse
- ❖ Operating for over 50 years
- ❖ Kilve Court is located half way between Bridgwater & Minehead, along the A39, set in the village of Kilve
- ❖ Providing residential courses, day courses, educational courses, conferences and much more...

MISSION STATEMENT

To provide residential experiences for all young people, to extend their horizons and enrich their lives.

The Centres

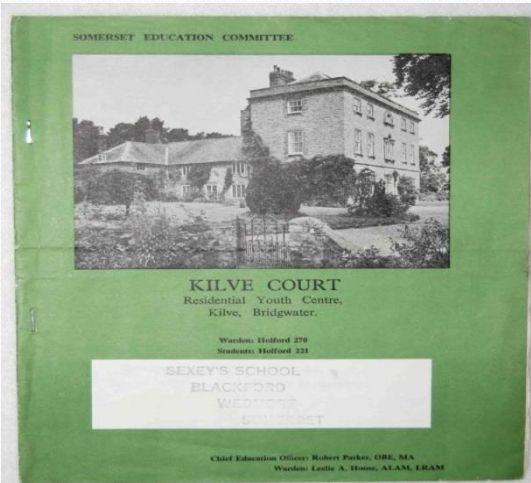


Location & History

Support Services
for Education



- ❖ The main house was constructed between 1702 to 1705 by Henry Sweating. He incorporated an older dwelling, which had been a farm. Further alterations were made in 1920 by Clough Williams-Ellis.
- ❖ In 1964 the house was given to Somerset County Council on a proviso that it would always be used for the education of children. Both outdoor education and gifted & talented, enrichment courses.
- ❖ It opened in 1965 with residential places for 26 students along with four staff. Since then it has grown into a 130 bed centre with whole teams for domestic, catering, office, instructors and maintenance roles.



Security & Policies

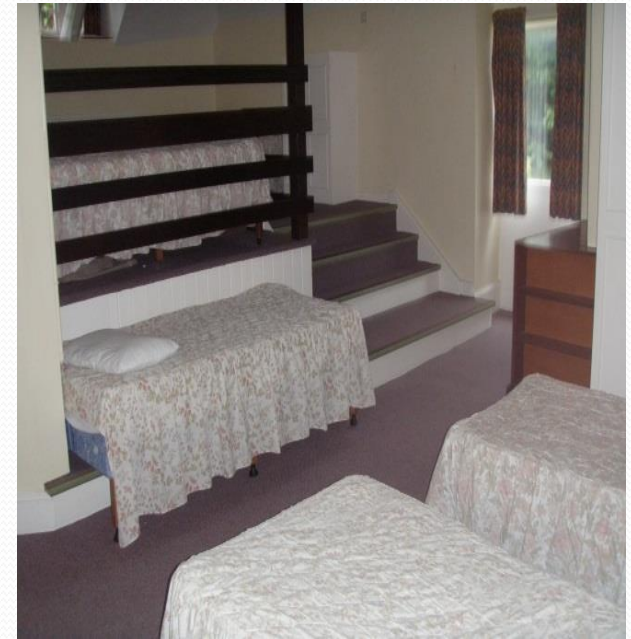
To operate safely and efficiently there are many procedures we have in place...

- AALA license (Adventurous Activities Licensing Authority)
- All staff are DBS checked
- NGB qualified staff (National Governing Body)
- Risk assessments & procedures for all activities
- All corridors have key pad entry systems
- Centre staff identified with uniforms
- 24h Duty staff on site in addition to your school staff
- CCTV around the site at strategic points



Accommodation

- Room sizes accommodate 2-12 people
- Each room has bunk beds or single beds with sinks & mirrors
- There are cubical toilets and showers on every corridor
- Staff have separate accommodation & bathrooms on every corridor
- There are smoke detectors in every room and throughout the buildings
- There is a keypad entry system into all accommodation areas (each has a different code)
- Pillows are provided, all other bedding is supplied by yourselves



Facilities At Kilve Court



- Dining room & common room
- 5 meeting/work/art rooms
- A library / IT room
- A souvenir shop
- Drying room



The Important Bit...FOOD!

BREAKFAST - A choice of cereal, followed by a cooked breakfast, with fruit juice, fresh fruit and yoghurts

LUNCH - A choice of 2 cooked meals, jacket potatoes, filled rolls and a fresh salad bar. Fruit for dessert

DINNER - 2 choices, one of which is vegetarian, a salad bar and a yummy pudding!

BREAK TIMES - Squash, biscuits, fruit or cake

We always accommodate dietary requirements if known in advance.
Everyone is catered for, always.



The Activities...



- **GRASS SLEDGING**



- **ARCHERY**



• CLIMBING WALL



LOW ROPES



• TEAM BUILDING



- **BEACH VISIT**



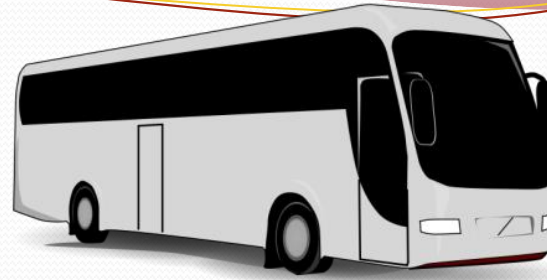
- **NIGHT WALK / MAZE**



- DISCO



A Typical Day...



ARRIVAL DAY

Arrive, unpack, settle in, welcome talk and a fire drill.



DURING YOUR STAY

Wake up bell 7:45am, breakfast is at 8:30am, morning activities, lunch, afternoon activities, evening meal, evening activities, bed time. There are break times in the morning and afternoon.

DEPARTURE DAY

Wake up and pack, move bags to your designated room, breakfast, last activity, lunch, goodbyes and depart.



Tips For Packing...

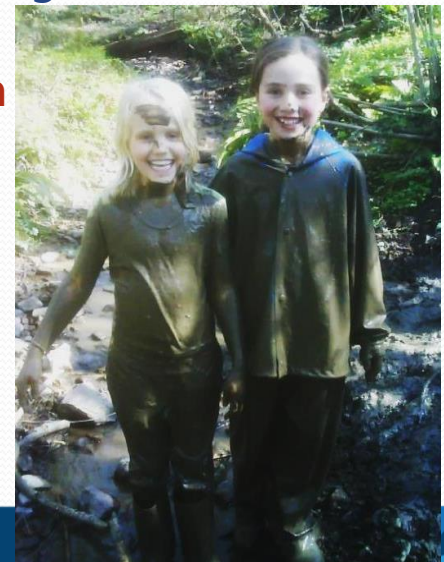
Please involve your child in packing their own suitcase – this way they will know what they own when packing to come home

Put names in clothes & footwear – really helps when packing to come home

Only pack clothes that are ok to get wet & muddy – children get upset if they get new clothes dirty, thinking that they will be in trouble

Do not pack any electrical items – they may get broken or damaged

lip balm, sun cream, a drinks bottle, a book, pocket money, a torch & a cuddly toy – are all recommended items to pack too. A detailed kit list will be issued from your school.



Cost:

- The cost for camp this year will be £235.74 (the breakdown of cost is on the letter that your child has brought home today). This includes full board, activities, travel)
- Payments will go live on Weduc on 14th November 2024
- There is the option to pay instalments or in full (You can pay in full at any time, but we ask that at least one payment be made by January 2025 so that we can confirm numbers with Kilve.
- The final and full balance must be paid by Friday 23rd May 2025
- Further information about financial assistance is on the back of the letter (including costings).

Finally...



Thank you for attending.

